

**UK** Installation Instructions  
**DE** Montageanleitung  
**CZ** Montážní návod  
**DK** Monteringsvejledning  
**EE** Paigaldusjuhend

**FI** Asennusohje  
**FR** Notice de montage  
**HU** Szerelési útmutató  
**IT** Montavimo Instrukcijos  
**LT** Montavimo Instrukcijos

**LV** Instalācijas instrukcija  
**NO** Monteringsanvisning  
**PL** Instrukcja montażu  
**SE** Installationsanvisning  
**RU** Инструкция по монтажу

**IP66 IK09 CE**

230-240 V  
50-60 Hz

Caution, risk of electric shock  
Danger, risque de chocs électriques

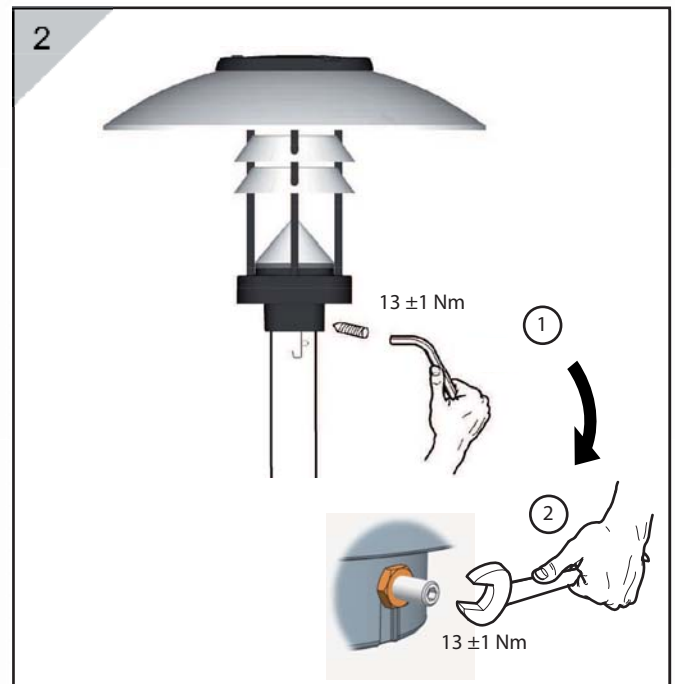
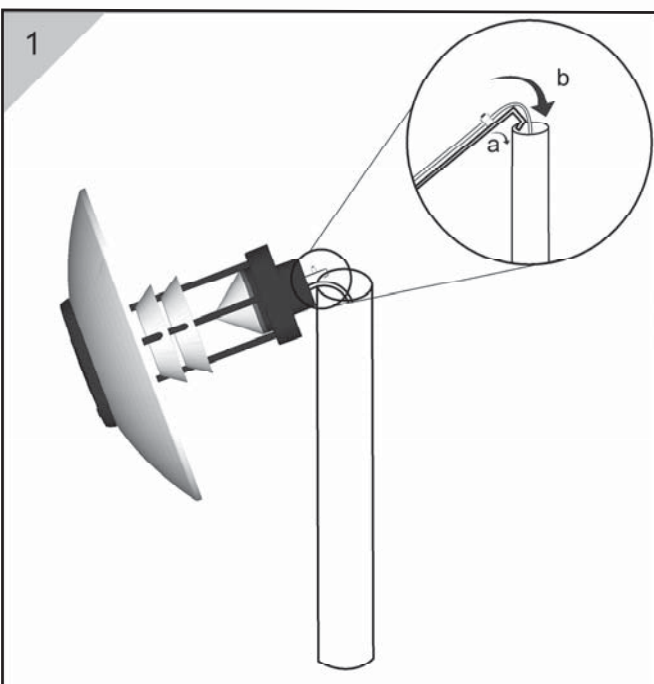
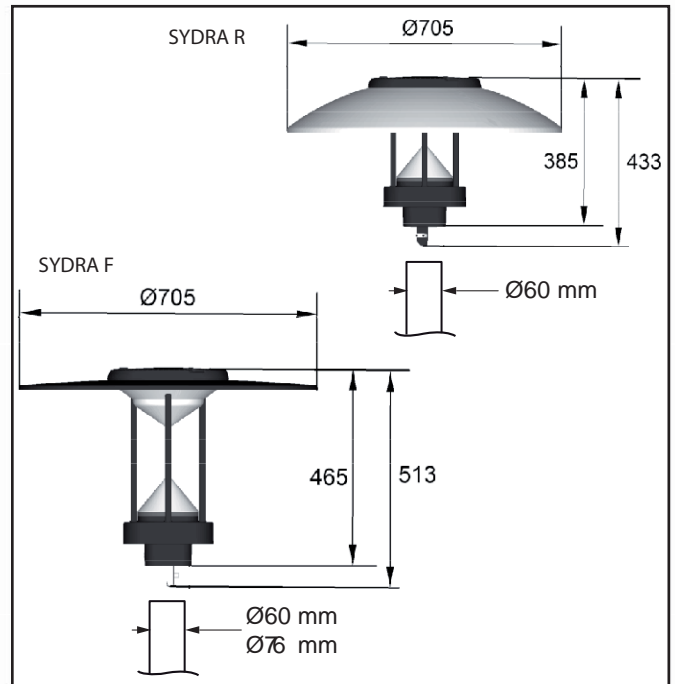
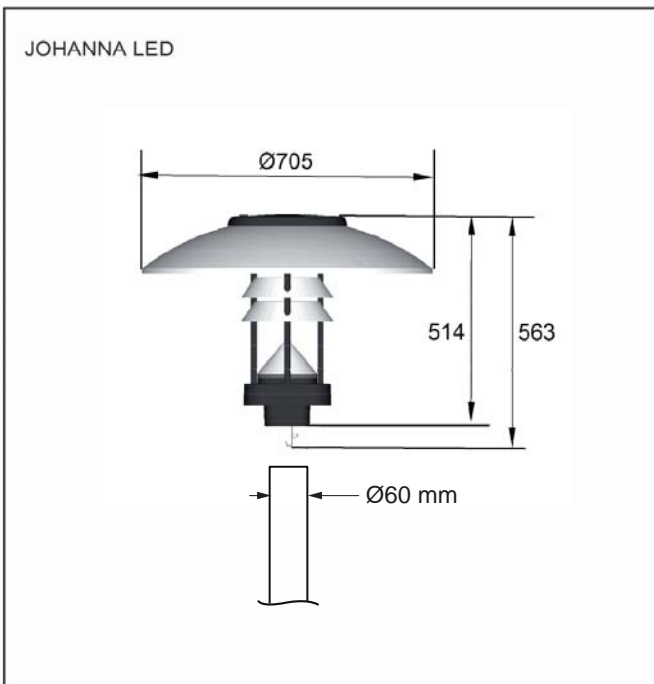
**CLASS I**  
**CLASS II**

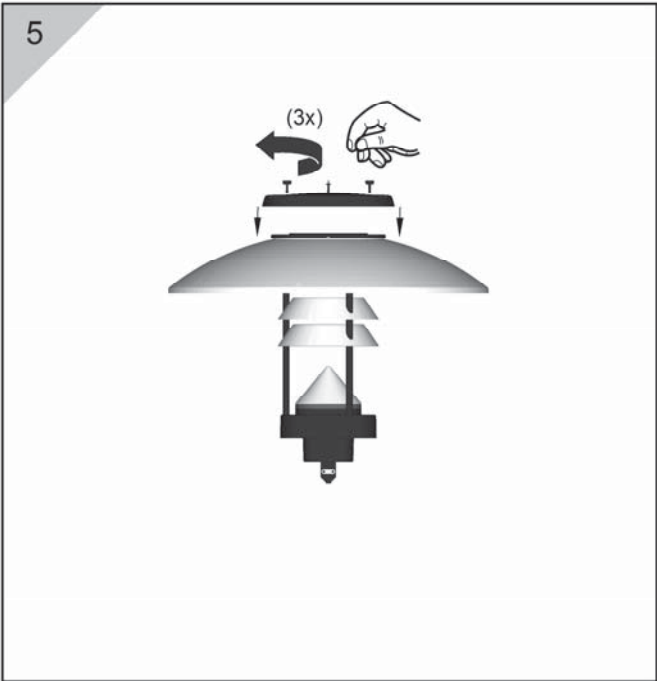
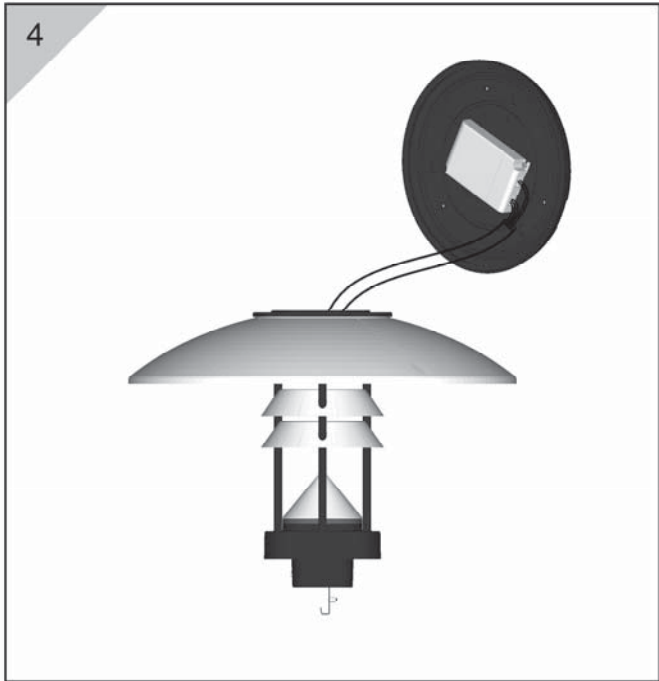
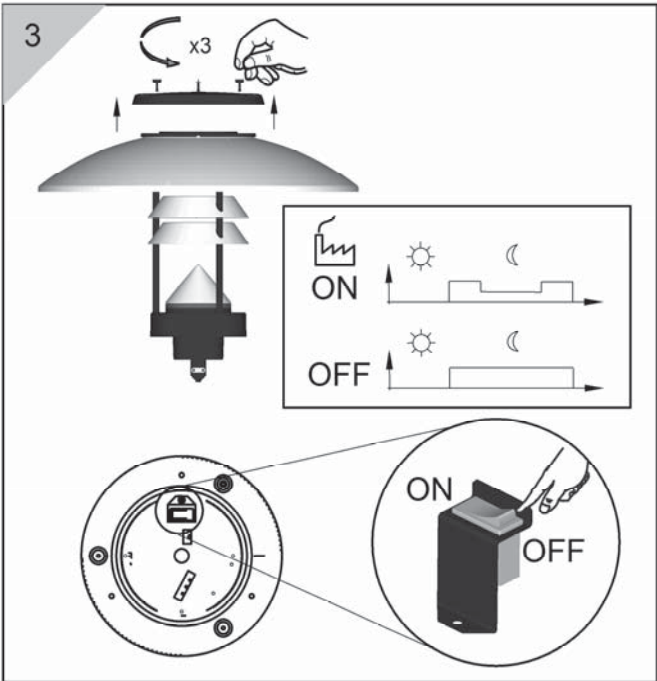
$I_{max} = 500 \text{ mA}$

BALLAST

JOHANNA LED	7,7 Kg
SYDRA R	7,4 Kg
SYDRA F	7,4 Kg

The light source & flexible cord of this luminaire shall only be replaced by the manufacturer or his service agent or a similar qualified person





SPARE KIT

